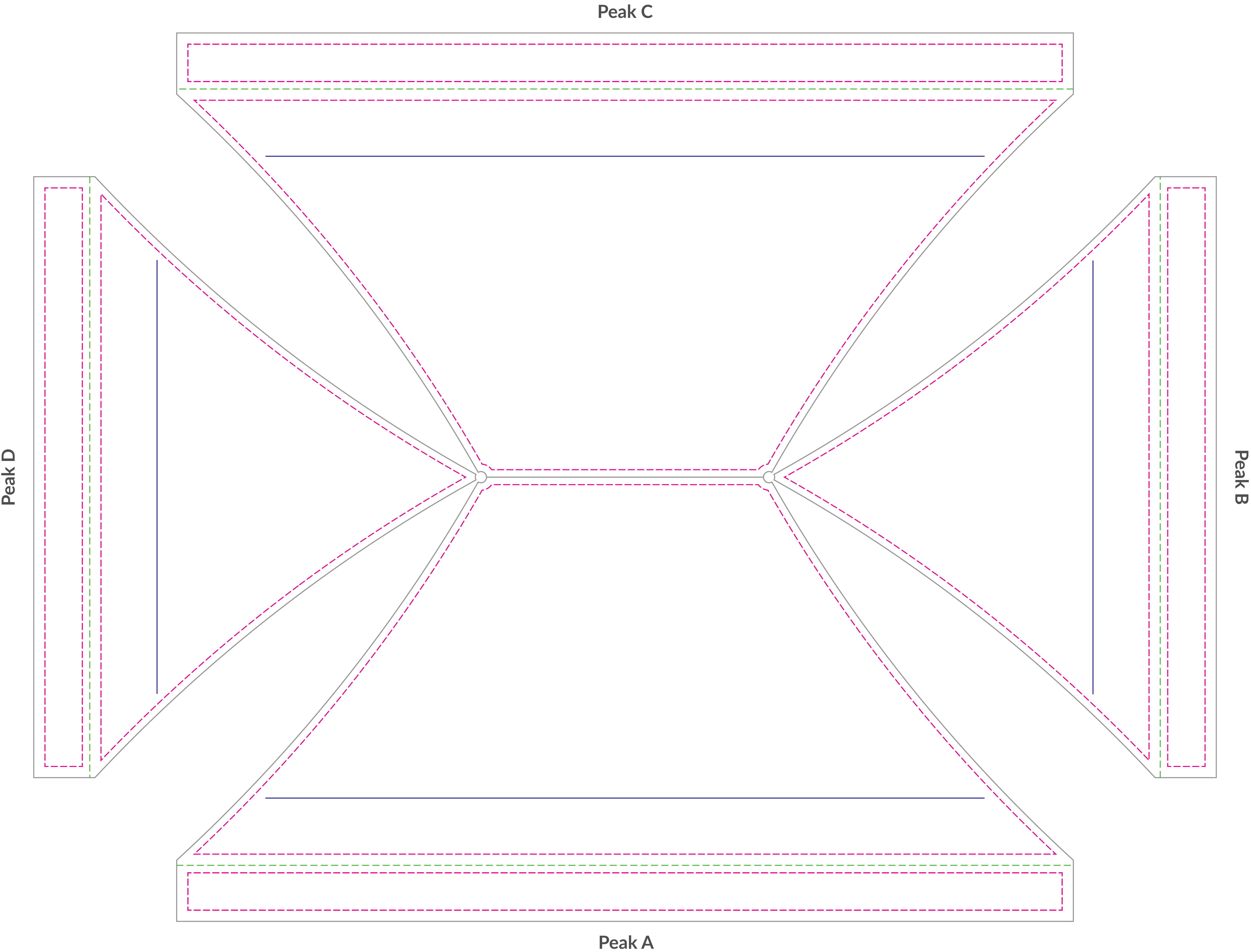


# 13x20 MONARCH TENT

(10% Scale)



**13'x20' MONARCH ROOF**  
VISUAL: A/C 118.9”h x 240”w B/D 118.4”h x 160.8”w  
**PEAK SAFETY: A/C 99”h x 230”w B/D 97.6”h x 151.6”w**  
**VALANCE SAFETY: A/C 10”h x 234”w B/D 10”h x 154.8”w**

## KEY

These lines will not be printed on the final product.

- |   |   |  |  |  |
|---|---|--|--|--|
| <br><b>Seam</b><br>Seam in material falls here. | <br><b>Safety</b><br>Keep logos and text within this area. | <br><b>Visual</b><br>This line represents the finished size of the product. | <br><b>Bleed</b><br>Extend your art to this line to be sure there aren't white edges on your art. | <br><b>Visibility</b><br>Place any key text and logos above this guide line for optimal visibility. |
|---|---|--|--|--|

## Customer Art Submission Guidelines

**Preferred File Formats:** Adobe Illustrator, Photoshop, Tiffs and Adobe PDF.

**Scale:** Please set up your file at 10% scale, with embedded graphics of at least 720 dpi.

**Example:** To set up a 80.75”h x 130”w full wall, your file size should be 8.075”h x 13”w.

**Fonts:** All fonts must be converted to outlines. If possible, font files (OTF or TTF) should also be included.

**Images:** 72 dpi at full size (720 dpi @ 10% scale) is optimal for photographic images. Any vector art will print at its highest possible resolution. Images should be embedded, or the native file provided.

**Color Profile:** Set up photographic images in CMYK color mode (RGB photos will be converted). Specific Pantone colors should have PMS Coated Swatch assigned to all art and copy.

**\*PLEASE PACKAGE ALL ART FILES THAT INCLUDE FONTS AND IMAGES.**

**\*\*ALL ELECTRONIC FILES SHOULD BE ACCOMPANIED BY A COMPOSITE PDF.**

