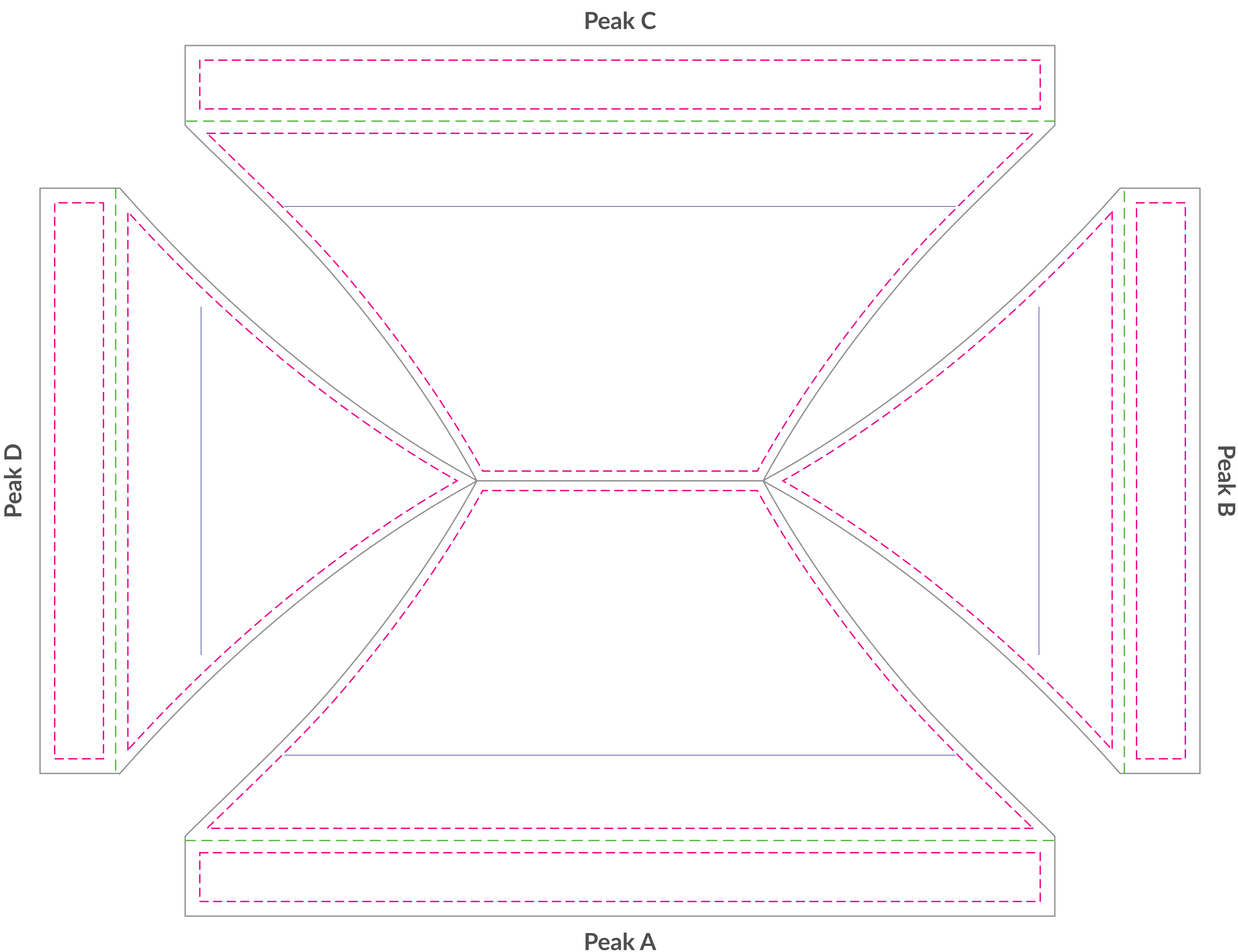


10x15 mightyTENT[®]

(10% Scale)



15' mighty ROOF
VISUAL: A/C 89.25”h x 178.25”w B/D 89.25”h x 120”w
PEAK SAFETY: A/C 69.25”h x 169.2”w B/D 67.5”h x 110.3”w
VALANCE SAFETY: A/C 10”h x 172.25”w B/D 10”h x 114”w

KEY

These lines will not be printed on the final product.

- Seam

Seam in material falls here.
- Safety

Keep logos and text within this area.
- Visual

This line represents the finished size of the product.
- Bleed

Extend your art to this line to be sure there aren't white edges on your art.
- Visibility

Place any key text and logos above this guide line for optimal visibility.

Customer Art Submission Guidelines

Preferred File Formats: Adobe Illustrator, Photoshop, Tiffs and Adobe PDF.

Scale: Please set up your file at 10% scale, with embedded graphics of at least 720 dpi.

Example: To set up a 80.75"h x 130"w full wall, your file size should be 8.075"h x 13"w.

Fonts: All fonts must be converted to outlines. If possible, font files (OTF or TTF) should also be included.

Images: 72 dpi at full size (720 dpi @ 10% scale) is optimal for photographic images. Any vector art will print at its highest possible resolution. Images should be embedded, or the native file provided.

Color Profile: Set up photographic images in CMYK color mode (RGB photos will be converted). Specific Pantone colors should have PMS Coated Swatch assigned to all art and copy.

***PLEASE PACKAGE ALL ART FILES THAT INCLUDE FONTS AND IMAGES.**

****ALL ELECTRONIC FILES SHOULD BE ACCOMPANIED BY A COMPOSITE PDF.**

